



## Kernel for DBX to NSF

“Software for Precise and Successful DBX to NSF Conversion”

### PRODUCT GUIDE

# Table of Contents

---

1.	Introduction to Kernel for Outlook Express to Notes .....	4
1.1	Using this Manual .....	4
1.2	About Kernel for Outlook Express to Notes .....	5
1.3	Salient Features .....	5
1.4	Who Should Use this Software? .....	5
2.	Getting Started .....	6
2.1	Installation Pre-requisites.....	6
2.2	Downloading Kernel for Outlook Express to Notes for the First Time .....	7
2.3	Install Kernel for Outlook Express to Notes .....	7
2.4	Start Kernel for Outlook Express to Notes .....	7
2.5	Uninstall Kernel for Outlook Express to Notes .....	8
3.	Software Interface .....	9
3.1	Menu-bar.....	9
3.2	Tool-bar.....	10
4.	Converting Outlook Express Items to Notes.....	11
4.1	Save in Single .NSF file.....	13
4.2	Save in Multiple .NSF Files.....	14
5.	Full Version .....	16
5.1	Requirement of Full Version.....	16
5.2	Purchasing Full Version.....	16
6.	Support.....	17
7.	Troubleshooting .....	18
7.1	Common Issues .....	18
7.2	Frequently Asked Questions .....	18
8.	Legal Notices .....	19
8.1	Copyright .....	19
8.2	Trademark .....	19
8.3	Disclaimer .....	19
8.4	License Agreement .....	19

# Table of Figures

---

Figure 3.1: File Menu .....	9
Figure 3.2: Help Menu .....	9
Figure 4.1: Select DBX file.....	11
Figure 4.2: Selected DBX file.....	12
Figure 4.3: Save in Single NSF File .....	13
Figure 4.4: Save Option .....	13
Figure 4.5: Save in Multiple NSF Files .....	14
Figure 4.6: Browse for Folder.....	14

# 1. Introduction to Kernel for Outlook Express to Notes

---

Welcome to the user manual of Kernel for Outlook Express to Notes, an email migration software for Outlook Express users. The software helps in migrating emails and other items of Outlook Express (.DBX) to Lotus Notes (.NSF). This user manual comprises step by step guidelines on using Kernel for Outlook Express to Notes.

## 1.1 Using this Manual

---

This user manual is intended to guide users on using Kernel for Outlook Express to Notes. We suggest that first time users should read this user manual completely and carefully before proceeding to use the software. However, if you are an experienced user, you can use the table of contents to find out information pertaining to the tasks that you need to perform by using Kernel for Outlook Express to Notes.

You can use the table of contents to navigate through different sections of this user manual. The table of contents lists all the sections that are contained in this user manual in chronological order. The user manual comprises the following sections:

- Introduction
- Getting Started
- Software Interface
- Converting Outlook Express Items to Notes
- Full Version
- Support
- Troubleshooting
- Legal Notices

Certain abbreviations have been used throughout this manual. For clear understanding of the contents of this user manual, please go through the list of abbreviations, mentioned below, before reading the manual.

### 1.1.1 List of Abbreviations

DBX: File extension for Outlook Express files

NSF: Notes System File

OE: Outlook Express

MS: Microsoft

RAM: Random Access Memory

MB: Mega-Byte

GB: Giga-Byte

## 1.2 About Kernel for Outlook Express to Notes

---

Kernel for Outlook Express to Notes is an email migration tool which effectively moves emails, attachments, images, text in Outlook Express environment to Lotus Notes (.NSF) environment. Kernel for DBX to NSF uses powerful migration algorithm that converts .DBX files to .NSF files. The converted files are easily accessible with Lotus Notes email client.

Emails, message properties, attachments, embedded images, email data, Unicode characters, sent items, drafts, outbox, emails which exist in deleted items folder, and items which are saved in personal folders are effectively migrated from DBX file to NSF file with Kernel for Outlook Express to Notes.

## 1.3 Salient Features

---

Salient features of Kernel for Outlook Express to Notes include:

- Efficient embedded migration algorithms to quickly export files from OE to Notes environment
- Easy to use, User friendly features with attractive interface
- Supports Unicode character migration
- Supports migration of as many .DBX files
- Displays preview of email data before saving the DBX file items
- Supports every version of Lotus Notes and Outlook Express for migration
- Converted .NSF files are easy to be mounted in Lotus Domino Server
- Two saving options: **Single .NSF** file saving and **Multiple .NSF** file saving
- Free evaluation version available which lets you save first 10 emails from the listed .DBX files

## 1.4 Who Should Use this Software?

---

Kernel for Outlook Express to Notes is an ideal tool for system administrators, individuals, technicians who need to migrate from Outlook Express to Lotus Notes email client. Its user friendly interface makes it easy to access requiring no special technical skills at all. All the .DBX files get converted to .NSF files within minutes with all the attachments, if any.

## 2. Getting Started

---

Now that you have understood the features and potential of Kernel for Outlook Express to Notes, you are ready to get a hand on experience of the software. To start the process of migration, you will first need to download and install this software.

It is strongly recommended that before installing Kernel for Outlook Express to Notes, you should go through the installation pre-requisites for the software to ensure that your computer is appropriately configured to run the software.

### 2.1 Installation Pre-requisites


---

The various pre-requisites for installing and running Kernel for Outlook Express to Notes can be broadly classified into two major categories – Hardware requirements and Software requirements.

#### 2.1.1 Hardware Requirements:

The hardware requirements for installing the software are as follows:

- Pentium Class Processor
- Minimum 64MB RAM (128 MB recommended)
- 10MB for Software installation
- Disk Space - Enough space to save the results

 You should have at-least 10 MB of free disk space if you want to migrate and save a 10 MB.DBX file.

#### 2.1.2 Software Requirements:

The software requirements for installing the software can further be grouped into two categories – Operating System requirements and Outlook Express, Lotus Notes version requirements.

The requirements are as follows:

##### 2.1.2.1 Operating System Requirements

Supported operating systems:

- Windows Vista
- Windows XP
- Windows 2003
- Windows 2000

### 2.1.2.2 Outlook Express Version Requirements


Supported Outlook Express versions:

- Version 4.0, 5.0, 5.5, 6.0

### 2.1.2.3 Lotus Notes Version Requirements

Supported Lotus Notes versions:

- Version 6.5, 7.0, 8.0

 Outlook Express and Lotus Notes should be installed on the computer system on which you are performing the migration.


## 2.2 Downloading Kernel for Outlook Express to Notes for the First Time

---

After checking your computer with the prescribed system requirements for Kernel for Outlook Express to Notes, you can download and install the software on your computer. You can buy the full version of the software from any one of our authorized resellers – Element5, Asknet and 2CO.

If you want to try using Kernel for Outlook Express to Notes before buying it, you can download the evaluation version from the following link:

<http://www.nucleustechnologies.com/download-dbx-to-nsf-conversion.php>

 You can save first 10 email items from every existing folder in the .dbx file. In order to save the entire converted email items of Outlook Express, you must purchase the full version of the software.

## 2.3 Install Kernel for Outlook Express to Notes

---

After downloading the installer file for Kernel for Outlook Express to Notes, you can install the software by running the file. To install Kernel for Outlook Express to Notes:

1. Double-click the Kernel for Outlook Express to Notes installer. Follow the on-screen instructions.

The **Setup Installation Complete** screen will be displayed.

2. Click **Finish** to launch the software.

## 2.4 Start Kernel for Outlook Express to Notes

---

To start Kernel for Outlook Express to Notes:

Click the **Start → All Programs → Kernel for Outlook Express to Notes**

Alternatively, you can launch Kernel for Outlook Express to Notes by double-clicking the shortcut icon available on the Desktop and Quick Launch icon.

## 2.5 Uninstall Kernel for Outlook Express to Notes


---

You may need to uninstall Kernel for Outlook Express to Notes. To uninstall the software:

1. Click the **Start → All Programs → Kernel for Outlook Express to Notes → Uninstall Kernel for Outlook Express to Notes**

A warning message will be displayed.

2. Click '**Yes**' to uninstall Kernel for Outlook Express to Notes.

 Before proceeding to uninstall Kernel for Outlook Express to Notes, you must ensure that the software is not running.

You can alternatively uninstall Kernel for Outlook Express to Notes from the **Control Panel** by performing the following steps:

1. Click the **Start Menu → Control Panel** and then double click the **Add or Remove Programs** icon.
2. Select **Kernel for Outlook Express to Notes** and click **Remove**.

A warning message will be displayed.

3. Click '**Yes**' to uninstall Kernel for Outlook Express to Notes.

# 3. Software Interface

---

Now that Kernel for Outlook Express to Notes has been installed on your computer, you can start using the software after getting acquainted with the software interface.

## 3.1 Menu-bar

---

The menu-bar of Kernel for Outlook Express to Notes comprises two main menus – File and Help.

### 3.1.1 File Menu

The **File** menu comprises three menu items.

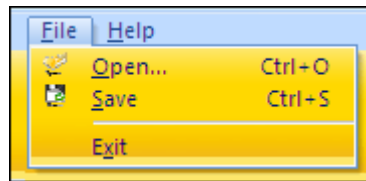


Figure 3.1: File Menu

Menu items in the **File** menu:

Field Name	Field Description
Open	Select to browse and add .DBX file to Kernel software for migration
Save	Select to view the saving options for saving the converted .DBX file items
Exit	Select to exit from the software

### 3.1.2 Help Menu

The **Help** menu comprises one menu item.

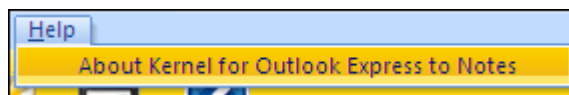


Figure 3.2: Help Menu




Menu item in the **Help** menu:

Field Name	Field Description
------------	-------------------

About Kernel for Outlook Express to Notes	Select to view version information, support details for Kernel for Outlook Express to Notes software
---	--

### 3.2 Tool-bar


The tool-bar in Kernel for Outlook Express to Notes is displayed below the menu-bar. The tool-bar provides a convenient and user-friendly method to perform certain actions that can also be performed by using the menu-bar. Read the information in the table below to find out about the tool-bar buttons:

Button	Button Name	Button Description
	Open	Click to browse and add .dbx file to Kernel software for migration
	Save	Click to view the saving options to save the converted .dbx file items to .nsf file
	Help	Click to view User's Guide of Kernel for Outlook Express to Notes software

## 4. Converting Outlook Express Items to Notes

Now that you have complete familiarity of the user interface of Kernel for Outlook Express to Notes, you are ready to migrate .dbx files to .nsf files. To perform migration:

1. Launch Kernel for Outlook Express to Notes.
2. **Open** window pops-up as soon the software is launched. .DBX files can be browsed and selected for migration with this window.

 The default user profile configured in Outlook Express email client is listed by the Kernel software. Every folder which exists in the default configured profile of Outlook Express gets listed in the Kernel software to view preview of the file contents.

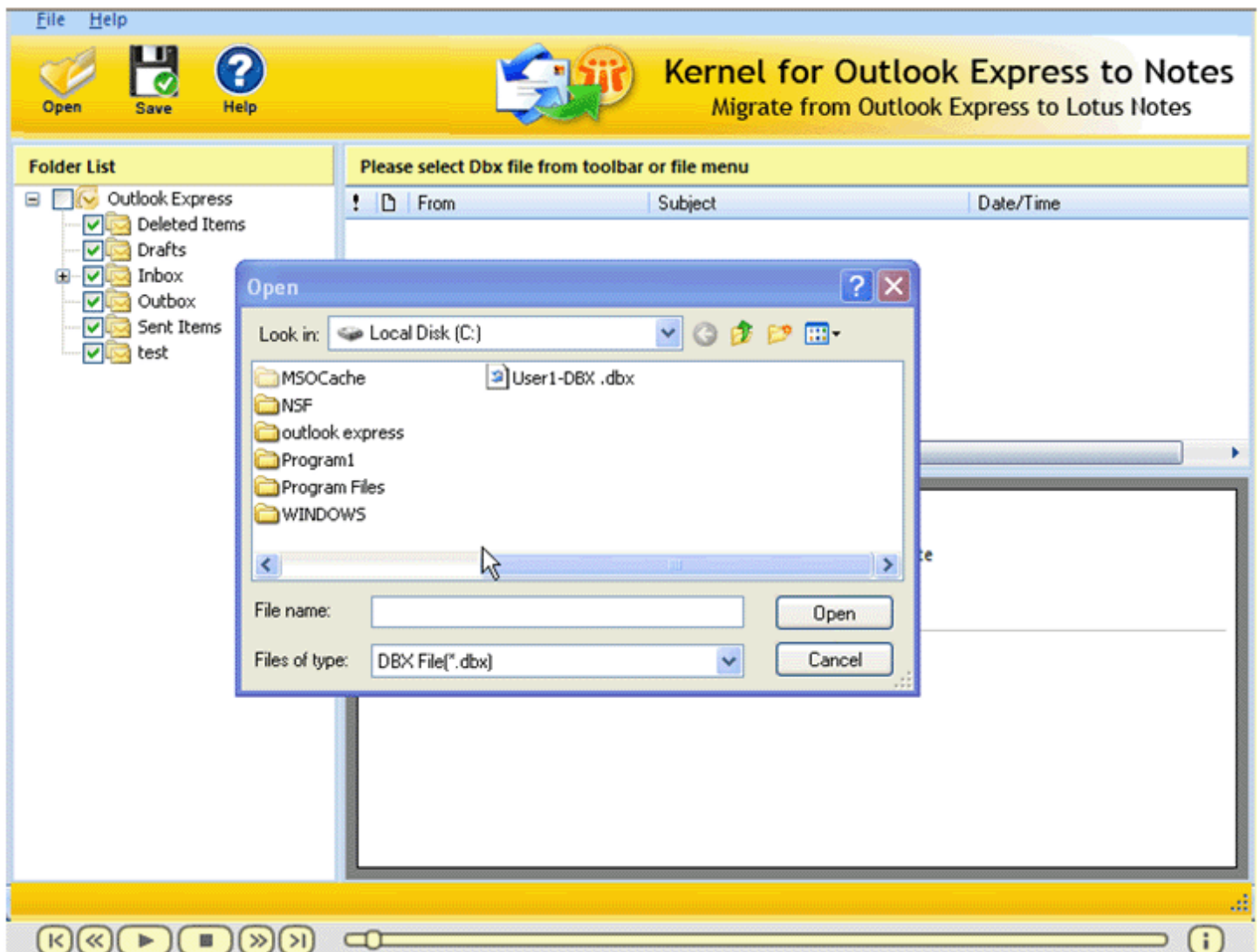


Figure 4.1: Select DBX file

3. Selected .DBX file get listed in the software. Select the file to view its contents.

Kernel software will now start **scanning** and **extracting** the selected .DBX file contents.

4. After successful extraction of the DBX file items, those items will be displayed in a tree like structure.

The converted attachments can only be opened or accessed in saved .NSF file opened with Lotus Notes email client. Kernel software will only display the attachment icon which assures that the attachment(s) are successfully converted by the software.

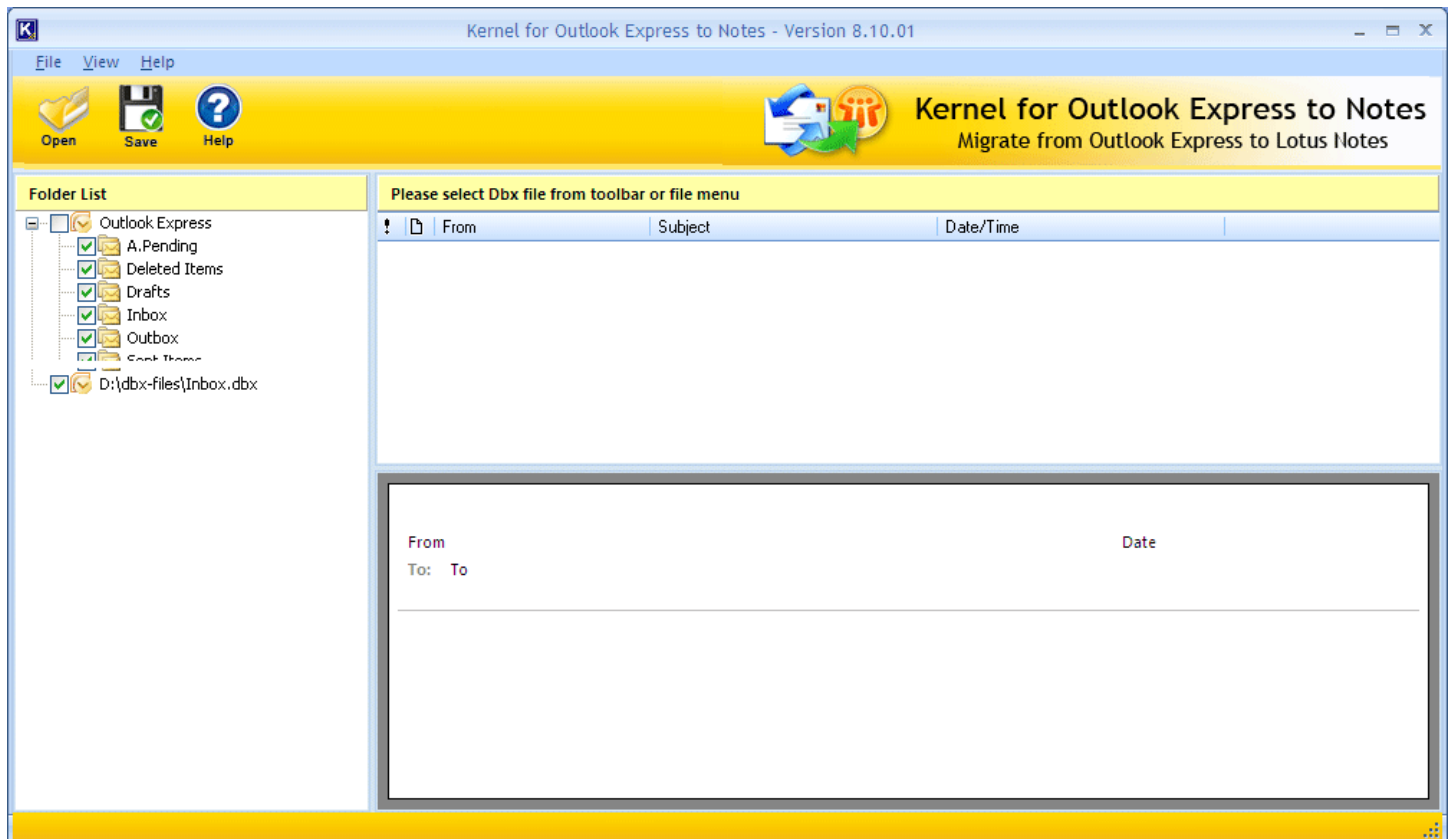


Figure 4.2: Selected DBX file

5. Select the folder or profile which you want to save and click the **Save** button from toolbar.

Kernel software provides two saving options: Save in **single NSF** file and Save in **multiple NSF** files.

- **Save in single NSF file:** This option lets you save file contents of several DBX files into one NSF file. The converted items get listed in the Lotus Notes profile according to their profiles, with which you can view the converted items.
- **Save in multiple NSF files:** This option lets you save file contents of separate DBX files into separate NSF files. The converted items of each individual file gets transferred to individual NSF files which are then accessed with Lotus Notes email client.

- **Save item content in text format:** Enable this option if you want to save the DBX file items without preserving the email data formatting. This will speed up the saving process of heavy sized DBX files.

## 4.1 Save in Single .NSF file

The **Save in Single .NSF file** saving option enables you to save email items of several .DBX files into one .NSF file.

- Select **Save in single NSF file** radio button and click **OK**.

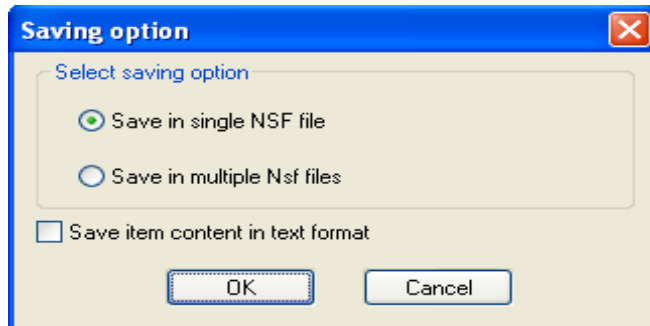


Figure 4.3: Save in Single NSF File

- A window will appear and asks for NSF file saving path, whether you want to save in new file or save in existing file. Choose accordingly and click **OK**.

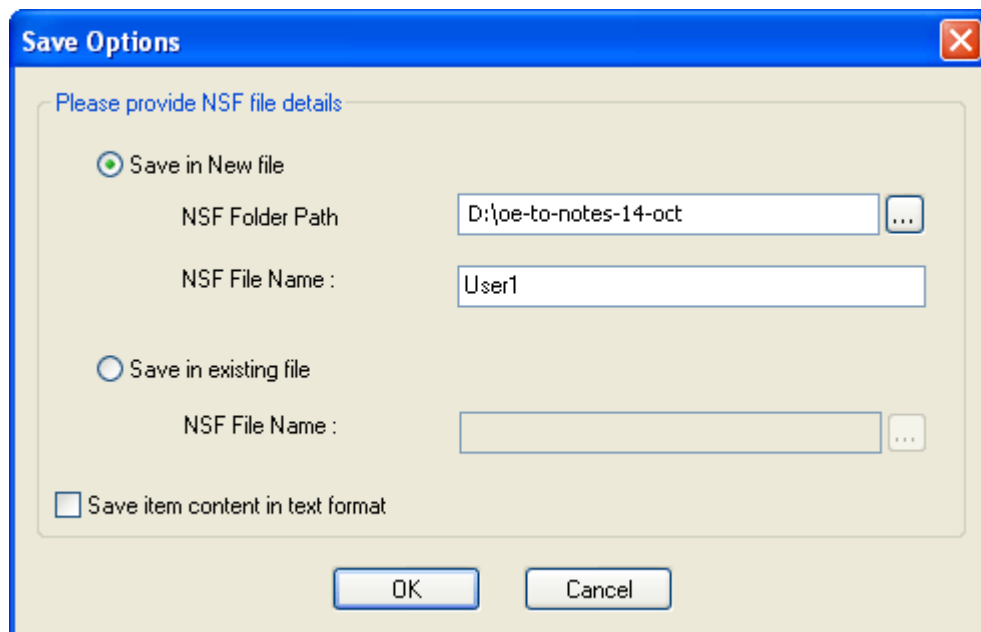


Figure 4.4: Save Option

As soon the saving gets completed, a message box will appear confirming the saving process. Kernel software will start the saving process.

## 4.2 Save in Multiple .NSF Files

The **Save in Multiple .NSF files** saving option is best when you have many .DBX file(s) and want to save the converted items in individual .NSF file(s). Kernel software allows you to save multiple .DBX file(s) into multiple .NSF file(s). For example, if you want to convert 4 .DBX files and want to view them in separate .NSF file(s), then select the Save in Multiple .NSF files option, Kernel software will then create 4 different .NSF files at the defined save location.

- Select the **Save in multiple NSF files** radio button and click **OK**.

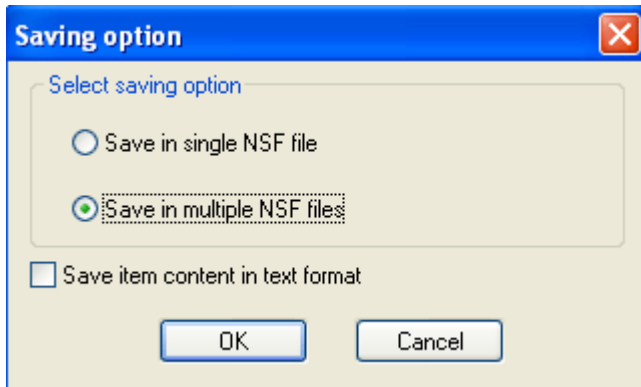



Figure 4.5: Save in Multiple NSF Files

- The **Browse for Folder** window gets opened. Select the folder where you want to save the converted .dbx files to multiple .nsf file(s) and click **OK** button to continue.



Figure 4.6: Browse for Folder

Kernel software will start the saving process. As soon the saving gets completed, a message box will appear confirming the saving process. The saved .NSF files can be viewed and accessed from the saved location with Lotus Notes email client.

 When the saved .NSF file is opened with Lotus Notes, the selected .DBX file gets listed under the “**Folders**” folder in Lotus Notes.

## 5. Full Version

---

Although you can use Kernel for Outlook Express to Notes evaluation version for free and experience the capabilities of the software, there are certain features that are not available in the evaluation version.

### 5.1 Requirement of Full Version

---

By using the evaluation version of Kernel for Outlook Express to Notes, you can perform the migration from Outlook Express environment to Lotus Notes environment and can save the first 10 email items per folder existing in the .DBX file. You cannot save the entire converted data in .NSF format.

You must purchase Kernel for Outlook Express to Notes software in order to save the entire converted email items of Outlook Express.

### 5.2 Purchasing Full Version

---

You can buy the full version of Kernel for Outlook Express to Notes from any one of our authorized resellers – Element5, Asknet and 2CO.

As soon as the purchase transaction with our resellers gets completed, our sales team will send you an email comprising the URL to download the full version of Kernel for Outlook Express to Notes and activation details of the software.

## 6. Support

---

We have an extensive and efficient support system in place to assist our customers with all issues related to using Kernel for Outlook Express to Notes. The software comes with an embedded help manual that can be accessed by clicking **Help** → **Help** in the tool-bar. You can also press the F1 key on the keyboard of your computer to access the embedded help of Kernel for Outlook Express to Notes.

You can access the online help for Kernel for Outlook Express to Notes at <http://www.nucleustechnologies.com/Online-Helps.html>

View Animated Working demo of the software at [http://www.nucleustechnologies.com/Animated\\_Demo\\_DBX\\_to\\_NSF.html](http://www.nucleustechnologies.com/Animated_Demo_DBX_to_NSF.html)

We also have live support wherein you can chat with our software experts at <http://www.nucleustechnologies.com/Support.html>

To talk on phone with our software experts call:

**Help line:**

+91-9818725861

1-866-348-7872 (Toll Free for USA/CANADA)

You can also email us about your queries at;

[sales@nucleustechnologies.com](mailto:sales@nucleustechnologies.com) for Sales

[support@nucleustechnologies.com](mailto:support@nucleustechnologies.com) for Support

[contact@nucleustechnologies.com](mailto:contact@nucleustechnologies.com) for General Queries

# 7. Troubleshooting

---

This section deals with your generic and specific queries pertaining to using Kernel for Outlook Express to Notes.

## 7.1 Common Issues

---

### **Why does Kernel for Outlook Express to Notes have limitations in evaluation copy?**

The free evaluation version of Kernel for Outlook Express to Notes is intended to enable you to experience the capabilities of the software. You will need to buy the software to save the entire converted email items in .NSF file.

## 7.2 Frequently Asked Questions

---

### **How to Buy Kernel for Outlook Express to Notes?**

You can buy Kernel for Outlook Express to Notes online at <http://www.nucleustechnologies.com/buy-dbx-to-nsf-conversion.php>

### **I have lost my full version for Kernel for Outlook Express to Notes. Can you help me?**

Please email us at [sales@nucleustechnologies.com](mailto:sales@nucleustechnologies.com). Please include your name, address, email address, and order confirmation number (if you have it). We will be happy to help you.

## 8. Legal Notices

---

This section comprises the legal specification about Kernel for Outlook Express to Notes and the company NUCLEUS DATA RECOVERY.COM PRIVATE LIMITED

### 8.1 Copyright

---

NUCLEUS DATA RECOVERY.COM PRIVATE LIMITED, Nucleus Kernel accompanied user manual and documentation are copyright of NUCLEUS DATA RECOVERY.COM PRIVATE LIMITED, with all rights reserved. Under the copyright laws, this user manual cannot be reproduced in any form without the prior written permission of NUCLEUS DATA RECOVERY.COM PRIVATE LIMITED. No Patent Liability is assumed, however, with respect to the use of the information contained herein.

© NUCLEUS DATA RECOVERY.COM PRIVATE LIMITED. All rights reserved.

### 8.2 Trademark

---

Nucleus Kernel ® is a copyright work of NUCLEUS DATA RECOVERY.COM PRIVATE LIMITED

Windows 95®, Windows 98®, Windows ME®, Windows NT®, Windows 2000 Server®, Windows 2000 Advanced Server®, Windows 2003 Server®, Windows XP®, Windows Vista, MS-DOS, Outlook Express and Lotus Notes are registered trademarks of Microsoft Corporation and IBM.

All other brand and product names are trademarks or registered trademarks of their respective companies.

### 8.3 Disclaimer

---

The Information contained in this manual, including but not limited to any product specifications, is subject to change without notice. NUCLEUS DATA RECOVERY.COM PRIVATE LIMITED provides no warranty with regard to this manual or any other information contained herein and here by expressly disclaims any implied warranties of merchantability or fitness for any particular purpose with regard to any of the foregoing NUCLEUS DATA RECOVERY.COM PRIVATE LIMITED assumes no liability for any damages incurred directly or indirectly from any technical or typographical errors or omissions contained herein or for discrepancies between the product and the manual. In no event shall NUCLEUS DATA RECOVERY.COM PRIVATE LIMITED, be liable for any incidental, consequential special, or exemplary damages, whether based on tort, contract or otherwise, arising out of or in connection with this manual or any other information contained herein or the use there of.

### 8.4 License Agreement

---

Kernel for Outlook Express to Notes software is Copyright work of Nucleus Data Recovery.Com Private Limited

#### Your Agreement to this License

You should carefully read the following terms and conditions before using, installing or distributing this software, unless you have a different license agreement signed by NUCLEUS DATA RECOVERY.COM PRIVATE LIMITED. The terms and conditions of this License describe the permitted use and users of

each Licensed Copy of Kernel for Outlook Express to Notes software. For purposes of this License, if you have a valid license, you have the right to use a single Licensed Copy of Nucleus Kernel.

### **Scope of License**

Each Licensed Copy of Kernel for Outlook Express to Notes software may either be used by a single person or used non-simultaneously by multiple people who use the software personally installed on a single workstation. All rights of any kind in Nucleus Kernel, which are not expressly granted in this License, are entirely and exclusively reserved to and by NUCLEUS DATA RECOVERY.COM PRIVATE LIMITED. You may not rent, lease, modify, translate, reverse engineer, decompile, disassemble, or create derivative works based on, Nucleus Kernel, nor permit anyone else to do so. You may not make access to Nucleus Kernel available to others in connection with a service bureau, application service provider, or similar business, nor permit anyone else to do so.

### **Warranty Disclaimers and Liability Limitations**

Kernel for Outlook Express to Notes software, and any and all accompanying software, files, data and materials, are distributed and provided AS IS and with no warranties of any kind, whether expressed or implied. In particular, there is no warranty for the quality of data recovered. You acknowledge that good data processing procedure dictates that any program, including Nucleus Kernel, must be thoroughly tested with non-critical data before there is any reliance on it, and you hereby assume the entire risk of all use of the copies of Nucleus Kernel covered by this License. This disclaimer of warranty constitutes an essential part of this License. In addition, in no event does NUCLEUS DATA RECOVERY.COM PRIVATE LIMITED authorize you or anyone else to use Kernel for Outlook Express to Notes software in applications or systems where Kernel for Outlook Express to Notes software failure to perform can reasonably be expected to result in a significant physical injury, or in loss of life. Any such use is entirely at your own risk, and you agree to hold NUCLEUS DATA RECOVERY.COM PRIVATE LIMITED harmless from any and all claims or losses relating to such unauthorized use.

### **General**

This License is the complete statement of the agreement between the parties on the subject matter, and merges and supersedes all other or prior understandings, purchase orders, agreements and arrangements. This License shall be governed by the laws of the State of Delhi. Exclusive jurisdiction and venue for all matters relating to this License shall be in courts and for a located in the State of Delhi, and you consent to such jurisdiction and venue. There are no third party beneficiaries of any promises, obligations or representations made by NUCLEUS DATA RECOVERY.COM PRIVATE LIMITED herein. Any waiver by NUCLEUS DATA RECOVERY.COM PRIVATE LIMITED of any violation of this License by you shall not constitute, nor contribute to, a waiver by NUCLEUS DATA RECOVERY.COM PRIVATE LIMITED of any other or future violation of the same provision, or any other provision, of this License.