

Kernel for OST to PST

Version: 7.05.01

“Migrate E-mails from .OST File to .PST File”

PRODUCT GUIDE

Table of Contents

1.	Introduction to Kernel for OST to PST.....	5
1.1	Using this Manual.....	5
1.2	About Kernel for OST to PST.....	6
1.3	Salient Features.....	7
1.4	About the Email Client File System.....	7
1.5	Who Should Use this Software?.....	8
2.	Getting Started.....	9
2.1	Installation Pre-requisites.....	9
2.2	Downloading Kernel for OST to PST for the First Time.....	10
2.3	Installing Kernel for OST to PST.....	10
2.4	Launching Kernel for OST to PST.....	11
2.5	Uninstalling Kernel for OST to PST.....	11
3.	Software Interface.....	12
3.1	Menu-bar.....	12
3.2	Tool-bar.....	14
3.3	Left Panel.....	15
3.4	Right Panel.....	15
3.5	Buttons Used.....	16
4.	Converting .OST File to a .PST File.....	17
4.1	Select and Scan .OST File.....	17
4.2	Preview Scanned File Items.....	17
4.3	Save as .PST.....	18
4.4	Save as .EML.....	19
4.5	Save as .MSG.....	19
4.6	Save as .DBX.....	19
5.	Full Version.....	21
5.1	Requirement of Full Version.....	21
5.2	Purchasing Full Version.....	21
5.3	Upgrading to Full Version.....	21

6.	Software Updates and Support.....	22
6.1	Upgrading to the Latest Version	22
6.2	Help and Support	22
7.	Troubleshooting	23
7.1	Common Issues	23
7.2	Frequently Asked Questions	23
8.	Legal Notice.....	24
8.1	Copyright	24
8.2	Trademark	24
8.3	Disclaimer	24
8.4	License Agreement	24

Table of Figures

Figure 3.1: Menu-bar	12
Figure 3.2: Menu-items of File menu	12
Figure 3.3: Tools menu	13
Figure 3.4: Help menu	13
Figure 3.5: Tool-bar	14
Figure 3.6: Left Panel	15
Figure 3.7: Right Panel	16
Figure 4.8: Main window of Kernel for OST to PST	17
Figure 4.9: Preview of listed emails and other items	18
Figure 4.10: Save options in Kernel for OST to PST	20

1. Introduction to Kernel for OST to PST

Welcome to the user manual for Kernel for OST to PST software, the most efficient and user-friendly email migration software that helps in migrating emails and other items from .OST file to .PST file. Apart from the functionality to convert .OST file data and save it as a PST file, software also provides supportive saving options to save converted file items in .EML, .MSG and .DBX files.

1.1 Using this Manual

This user manual is intended to guide System Administrators – a novice and/or experienced with complete working of Kernel for OST to PST software. We suggest that first time users should read this user manual completely and carefully before proceeding to use the software. However, if you are an experienced user, you can use the table of contents to find out information pertaining to the tasks that you need to perform by using Kernel for OST to PST. You can use the table of contents to navigate through different sections of this user manual. The table of contents lists all the contained sections in chronological order. The user manual comprises the following sections:

- Introduction
- Getting Started
- Software Interface
- Converting an OST file to a PST file
- Full Version
- Software Updates and Support
- Troubleshooting
- Glossary
- Legal Notices

Certain acronyms have been used throughout this manual. For clear understanding of the contents of this user manual, please go through the list mentioned below, before reading the manual.

1.1.1 List of Acronyms

OST or .OST: Offline Storage Files

PST or .PST: Personal Storage Files

EML or .EML: Electronic Mail (Outlook Express)

DBX or .DBX: Email Folder (Outlook Express)

RTF or .RTF: Rich Text Format

MS: Microsoft

RAM: Random Access Memory

MB: Mega-Byte

GB: Giga-Byte

1.2 About Kernel for OST to PST

Kernel for OST to PST is email migration software for Offline Storage Files created with MS Outlook. Software comprises of several advanced features such as four saving formats for converted .OST file items with strong and effective conversion and recovery engine which exports and restores more efficiently.

Kernel for OST to PST conversion software helps to export .OST file items to .PST file or .DBX, .EML and .MSG file(s). It also recovers those emails which have been permanently deleted from the 'Deleted Items' folder from the user mailbox. Multi-purpose email migration software, which will export as well as recover, deleted emails.

Offline Storage Files or .OST files generally become inaccessible due to improper functioning of MS Exchange Server because of server downtime, database corruptions, virus contaminations and oversized and corrupt files (2GB file size).

OST files get affected due to these mentioned errors and create problems at the time of downloading of emails and other items in user mailbox at his/her workstation. Inaccessible exchange server stops communicating or transmitting to user accounts where the user faces inaccessibility to any new received emails and recently archived items.

Kernel for OST to PST helps to export emails, contacts, calendars, journals, appointments, tasks, events, attachments, embedded images, attached images, email properties (To, CC, BCC, Subject, From), date and time, email text formatting, Unicode characters, RSS Feeds, Drafts, Journals, and Personal folder items from the user mailbox existing in .OST files. It also recovers emails which have permanently deleted from the "Deleted Items" folder of the user mailbox.

Kernel for OST to PST software scans the .OST file and lists the file contents in original folder hierarchy, which exists in .OST file. Preserved folder hierarchy helps to obtain better accessibility and readability of the listed items. Preview of items can be viewed in the right panel of the software where complete email data is displayed. The listed file items assure successful conversion of OST file items to .PST/ .DBX/ .EML or .MSG files. Recovered emails, which have deleted permanently are recovered and listed in the **Deleted Items** folder. View preview and select the folders which are to be saved in the desired file format.

Due to its quick email scanning, and conversion capabilities, Kernel for OST to PST is considered as the ultimate solution for email migration requirements for MS Exchange Server.

Saving options provided by Kernel for OST to PST software enables you to save .OST file items as .PST, .EML, .MSG or .DBX, depending on your migration requirements.



1.3 Salient Features

Kernel for OST to PST enhanced features makes it the best available software for .OST file conversion. Salient features of the software are:

1. Accurate and reliable export of email and other items from .OST file to .PST file.
2. Recovery of permanently deleted emails from the **Deleted Items** folder. Recovery of complete email data, attachments, and images, text formatting and other properties associated with recovered emails.
3. Restores original formatting of emails contained in the .OST files, where emails are recovered, migrated and saved in Plain Text, RTF and HTML format.
4. Software features powerful data search engine that generates scan result, which are faster and more accurate.
5. It provides preview in a tree like structure that enables the user to analyze the search results conveniently before converting the .ost file items to any desired file format.
6. Software offers four saving options –.PST, .EML, .MSG, .DBX to save emails, which provides greater viewing and accessibility flexibility with the desired email client.


1.4 About the Email Client File System

Before moving further to discuss migration from .OST files to .PST files, it is important to understand various file systems that are related to worldwide used email client software. The most popular email client software for Windows based computers are:

- MS Outlook
- Outlook Express

MS Outlook uses .msg files for storing emails. One .msg file corresponding to each email message is created and stored on the computer. To store large number of messages, MS Outlook creates a .pst file, which is a database file used for collective storage of emails associated with MS Outlook. MS Outlook also supports offline mode of working. These ost files store emails, calendars, appointments, drafts, attachments etc. in offline storage format. However, MS Outlook cannot be used to access .ost files and a MS Exchange account is required to access an .ost file.

Offline Storage Files are also referred as .OST files; these files allow users to work in offline mode with exchange mailbox. Users can work without exchange connectivity and can perform functions like email composing, updating contacts and calendar events, scheduling meetings etc. Once the mailbox gets connected with the exchange server, recently performed actions automatically synchronize with Microsoft Exchange Server and updates are made to server side objects.

 It is necessary to have MS Outlook configured and synchronized with an Exchange Server account to use .OST files.

Outlook Express uses .eml files to store email messages and one .eml file is created for each email message associated with Outlook express. To collectively store email messages in a database, Outlook Express uses .dbx files.

1.5 Who Should Use this Software?

The OST to PST conversion capability of Kernel for OST to PST Conversion makes this software preferred choice of system administrators, who handle email migration task in an organization.

Kernel for OST to PST eases the conversion of .ost files to .pst files. Therefore, if you want to migrate ost file items to an accessible file format like pst, dbx, eml or msg, then you should use Kernel for OST to PST to scan convert the OST file into a .pst file.

2. Getting Started

Now that you have understood the features and potential of Kernel for OST to PST, you are ready to get hands on experience of the software. To start the process of .ost to.pst conversion, first of all you will first need to download and install the software. However it is strongly recommended that before installing Kernel for OST to PST, you should go through the installation pre-requisites for the software to ensure that your system is properly configured to run the software.


2.1 Installation Pre-requisites

The various pre-requisites for installing and running Kernel for OST to PST can be broadly classified into two major categories – Hardware requirements and Software requirements.

2.1.1 Hardware Requirements:

The hardware requirements for installing the software are as follows:

- Pentium Class Processor
- Minimum 64MB RAM (128 MB recommended)
- 10MB for Software installation
- Disk Space - Enough space to store the converted files

 You should have at-least 5 GB of free disk space if you want to convert and save 5 GB.OST file into .PST file.

2.1.2 Software Requirements:

The software requirements for installing Kernel for OST to PST can further be grouped into two categories – Operating System Requirements and MS Exchange Server Requirements. The requirements are as follows:

2.1.2.1 Operating System Requirements

Supported Operating Systems:

- Windows Vista
- Windows XP
- Windows 2003
- Windows 2000

2.1.2.2 MS Exchange Server Requirements

Supported versions of MS Exchange Server:

- MS Exchange Server 2007
- MS Exchange Server 2003
- MS Exchange Server 5.5
- MS Exchange Server 5

2.1.2.3 MS Outlook Requirements

- MS Outlook 2007
- MS Outlook 2003
- MS Outlook 2000
- MS Outlook 98
- MS Outlook 97

2.1.2.4 Outlook Express Requirements

- MS Outlook Express 6.0
- MS Outlook Express 5.5
- MS Outlook Express 5.0

2.2 Downloading Kernel for OST to PST for the First Time

After checking your computer with the prescribed system requirements for Kernel for OST to PST, you can download and install the software on your computer. You can buy the full version of software from any of our authorized resellers– Element5, Asknet and 2CO.

If you want to try Kernel for OST to PST before buying it, then download the evaluation version from the following link:

<http://www.nucleustechnologies.com/download-ost-pst-conversion.php>

You can scan the .ost files saved on your system by using the evaluation version of Kernel for OST to PST; however, you will need to purchase full version of the software to save ost file items and utilize the available saving options i.e. PST, .EML, .MSG and .DBX.

2.3 Installing Kernel for OST to PST

After downloading the installer file for Kernel for OST to PST, you can install the software by running the file. To install the software:

1. Double-click Kernel for OST to PST installer. Follow the on-screen instructions

The **Setup Installation Complete** screen will be displayed.

2. Click **Finish**, the main window of **Kernel for OST to PST** software will be launched.

2.4 Launching Kernel for OST to PST

If you did not launch the software after installing it, follow these steps to launch it later:

To launch Kernel for OST to PST:

Click **Start → All Programs → Kernel for OST to PST**

Alternatively, you can launch Kernel for OST to PST by double-clicking the shortcut icon available on the desktop and system tray (if enabled during setup installation).


2.5 Uninstalling Kernel for OST to PST

You may need to uninstall and re-install Kernel for OST to PST for reasons like activation to full version. To uninstall Kernel for OST to PST:

1. Click **Start → All Programs → Kernel for OST to PST → Uninstall Kernel for OST to PST**

A warning message before un-installing will be displayed on the screen.

2. Click **Yes** to uninstall Kernel for OST to PST.

 Before proceeding to uninstall Kernel for OST to PST, you must ensure that the software is not running on your computer.

Kernel for OST to PST will be successfully uninstalled from your system.

3. Software Interface

Now that Kernel for OST to PST has been installed on your computer, you can start using the software after getting acquainted with the software interface.

3.1 Menu-bar

The menu-bar of Kernel for OST to PST comprises three main menus – File, Tools, and Help.



Figure 3.1: Menu-bar

3.1.1 File Menu

The **File** menu comprises three menu items.

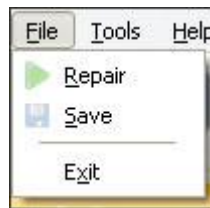


Figure 3.2: Menu-items of File menu

Option	Button Description
Repair	Lists the .OST file for conversion
Save	Displays save options to save the OST file contents
Exit	Close Kernel for OST to PST conversion

3.1.2 Tools Menu

The **Tools** menu comprises five menu items.

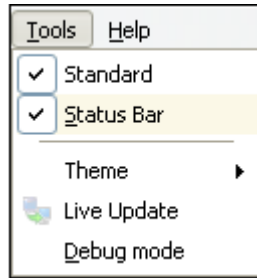


Figure 3.3: Tools menu

Option	Description
Standard	Check or Uncheck to hide or show standard tool bar in Kernel for OST to PST conversion software
Status Bar	Check or Uncheck to hide or show the Status Bar
Theme	Shows available themes like Office 2000 Theme, Office 2003 Theme and Office XP Theme, to change the Graphical User Interface.
Live Update	Updates the version of Kernel for OST to PST conversion with latest version available on Nucleus Data Recovery server. This process comes into effect when there is an updated version of the Kernel software available.
Debug Mode	Generates a log file for Kernel software. You can send this log to Nucleus Support if in any case you need help related to the Kernel software.

3.1.3 Help Menu

The **Help** menu comprises three menu items.

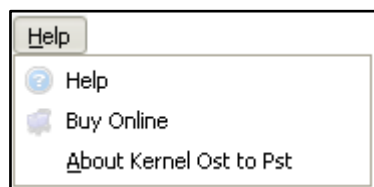


Figure 3.4: Help menu

Menu items in the Help menu:

Option	Description
Help	View User Manual of Kernel for OST to PST Conversion
Buy Online	Purchase the software online from website
About Kernel OST to PST	View version and support information of Kernel for OST to PST Conversion

3.2 Tool-bar

The tool-bar in Kernel for OST to PST is displayed below the menu-bar. The tool-bar provides a convenient and user-friendly method to perform certain actions that are also available in the menu-bar.



Figure 3.5: Tool-bar

Option	Button Description
Repair	Lists the OST file for conversion
Save	Opens save options window to select the saving format
Live Update	Updates the version of Kernel for OST to PST conversion with latest version available on Nucleus Data Recovery server. This process comes into effect when there is an updated version of the Kernel software available.
Help	View User Manual of Kernel for OST to PST Conversion
Buy Online	Purchase the software online from website

3.3 Left Panel

Whenever you browse and select an .ost file for conversion and click Scan, the screen gets divided into two panels: left panel and the right panel.

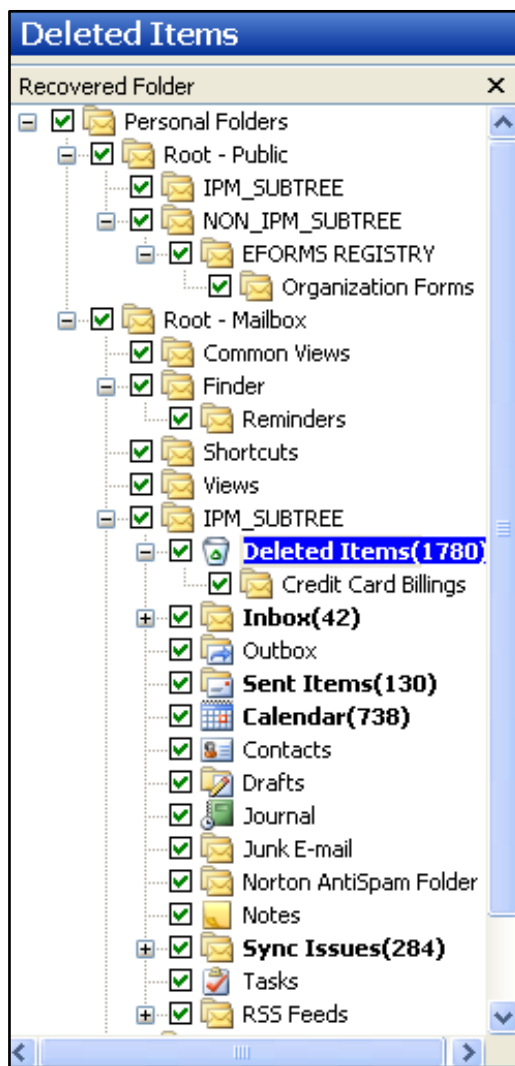


Figure 3.6: Left Panel

The left panel displays the email folders contained in the .ost file in a hierarchical tree like structure. You can click any of the folders available in the left pane to view its contents in right panel.

3.4 Right Panel

The right panel of the Kernel for OST to PST interface is divided into two halves.

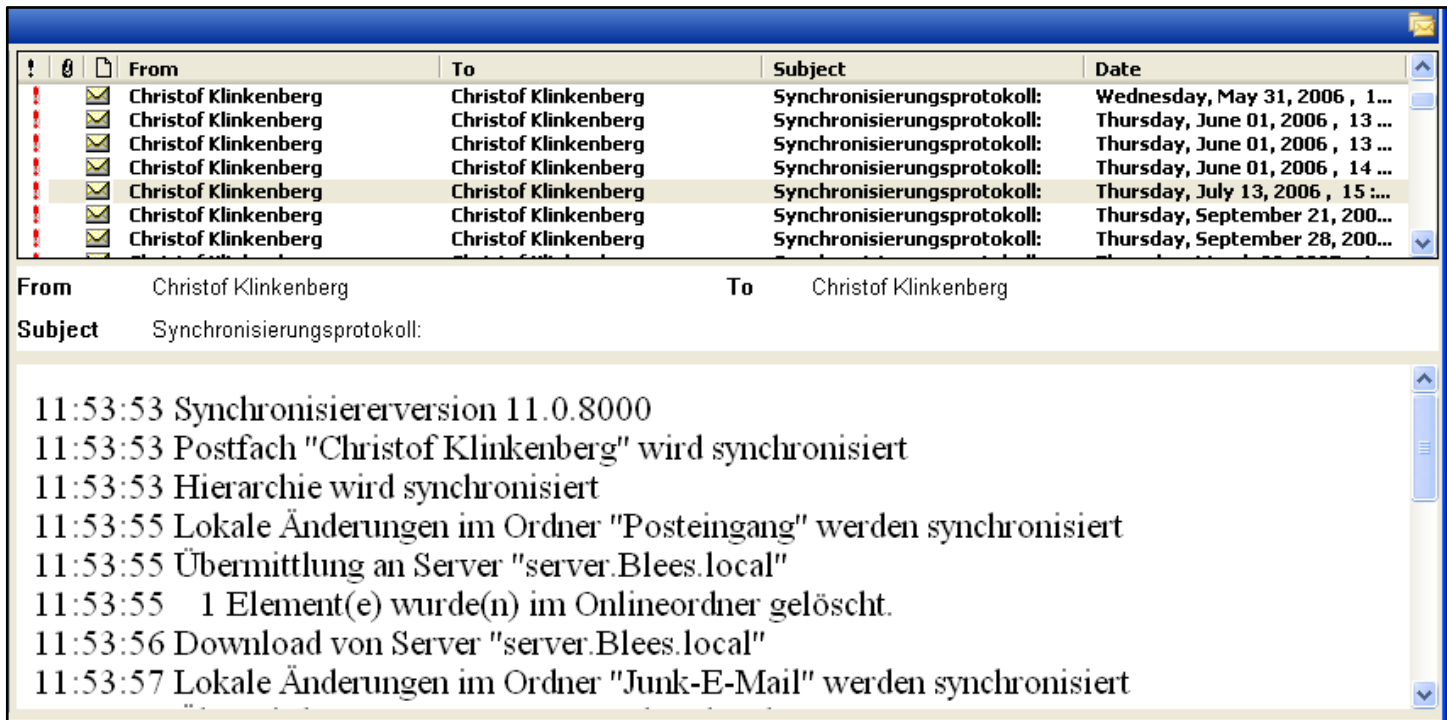


Figure 3.7: Right Panel

The top pane of the right panel displays the contents of the folder selected in the left panel. If you select any item from top pane of the right panel, a preview of that item will be displayed in the bottom pane.

3.5 Buttons Used

Apart from the standard options available in the menu-bar and the tool-bar, two buttons – **Browse** and **Scan** are displayed on the main window. The Browse button, which is placed at the center of the main window, enables you to browse and select the .ost file that needs to be converted into .pst file format.

The **Scan** button is available at the bottom-right corner of the main window. Whenever you browse and select an .ost file for conversion, you need to click the **Scan** button to start the scanning process and get preview of the contents of the file before converting it to a .pst file.

When scanning starts, two buttons **Back** and **Save** are displayed at the bottom-right corner of the main window.

Option	Description
Scan	Scans the OST file and preview its contents
Back	To go to the previous screen
Save	Saves the converted file

4. Converting .OST File to a .PST File

Now that you have got acquainted with the user interface of Kernel for OST to PST, you are ready to convert an .ost file into a .pst file.

4.1 Select and Scan .OST File

To convert an .ost file into a .pst file, first of all you need to select and scan the file that needs to be converted.

To select and scan a file:

1. Launch Kernel for OST to PST. Click **Browse** and select the desired .ost file.
2. Click **Scan** to start scanning the file.

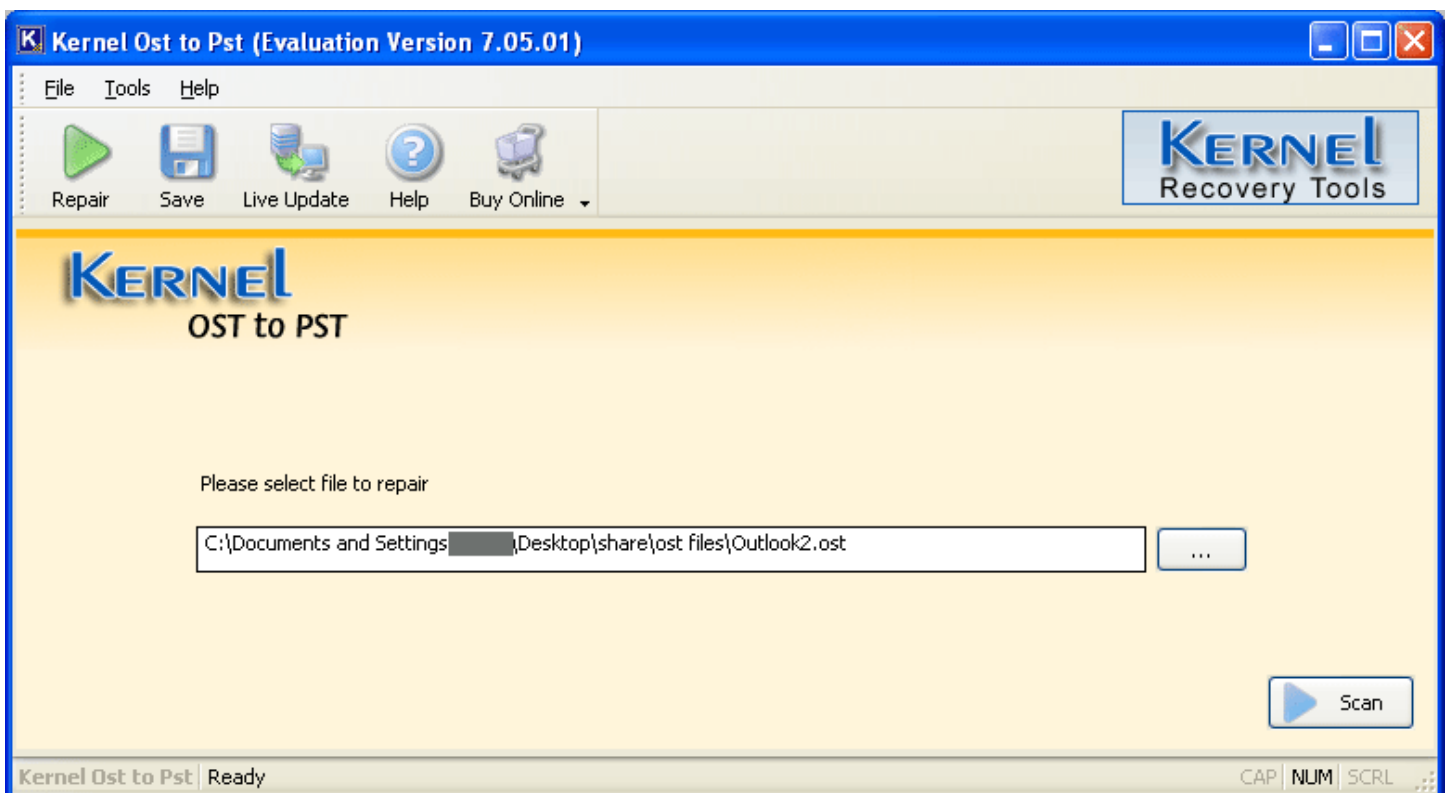


Figure 4.8: Main window of Kernel for OST to PST

4.2 Preview Scanned File Items

You can preview the contents of an .ost file before converting it into a .pst file to ensure accuracy of the emails and email data for conversion.

To preview a file;

1. Select the parent folder of the file from the left pane.
2. Select the file from the top panel of the right pane.

The preview of the file will be displayed in the bottom panel of the right pane.

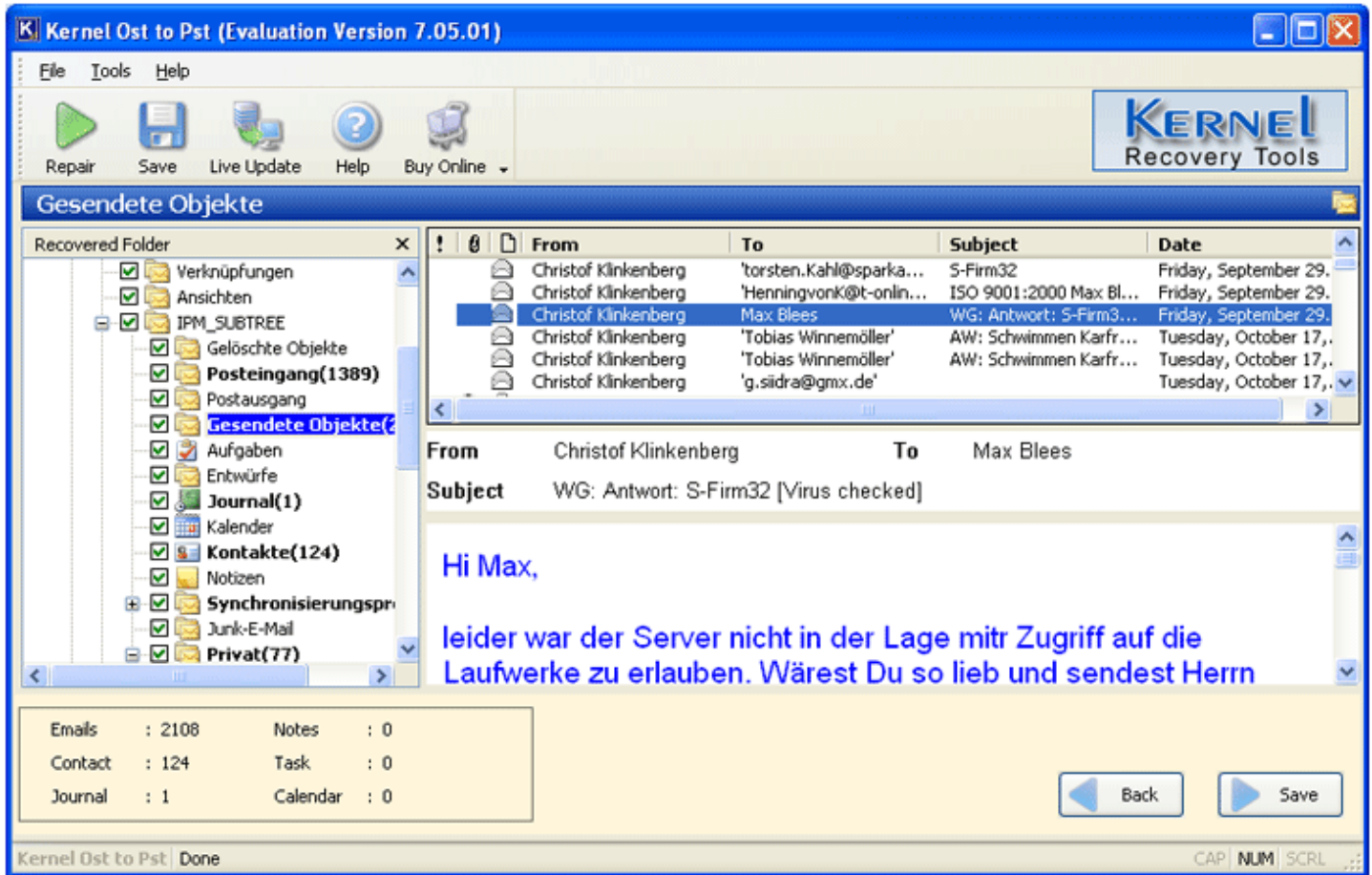



Figure 4.9: Preview of listed emails and other items

4.3 Save as .PST

To convert an .ost file into a .pst file, you will need to save the .ost file items in .pst format. To save a file as a .pst file, select the appropriate folders from left pane:

1. Click **Save**.
2. Select the **Save as PST (Microsoft Outlook)** radio button. Click **Save**.
3. Browse and select the desired location for saving the .pst file and click **OK**.

 The saving functionality is not available in the evaluation version of Kernel for OST to PST. However, you can preview the contents of .ost file in evaluation version, but for saving it you will need to buy the full version of Kernel for OST to PST.

4.4 Save as .EML

To save the selected file as an .eml file, select the appropriate folders from left pane:

1. Click **Save**.
2. Select the **Save as EML (Outlook Express)** radio button. Click **Save**.
3. Browse and select the desired location for saving the file and click **OK**.

4.5 Save as .MSG

To save a file as .msg file, select the appropriate folders from left pane:

1. Click **Save**.
2. Select the **Save as MSG (Microsoft Outlook)** radio button. Click **Save**.
3. Browse and select the desired location for saving the file and click **OK**.

4.6 Save as .DBX

To save a file as a .dbx file, select the appropriate folders from left pane:

1. Click **Save**.
2. Select the **Save as DBX (Outlook Express)** radio button. Click **Save**.
3. Browse and select the desired location for saving the file and click **OK**.

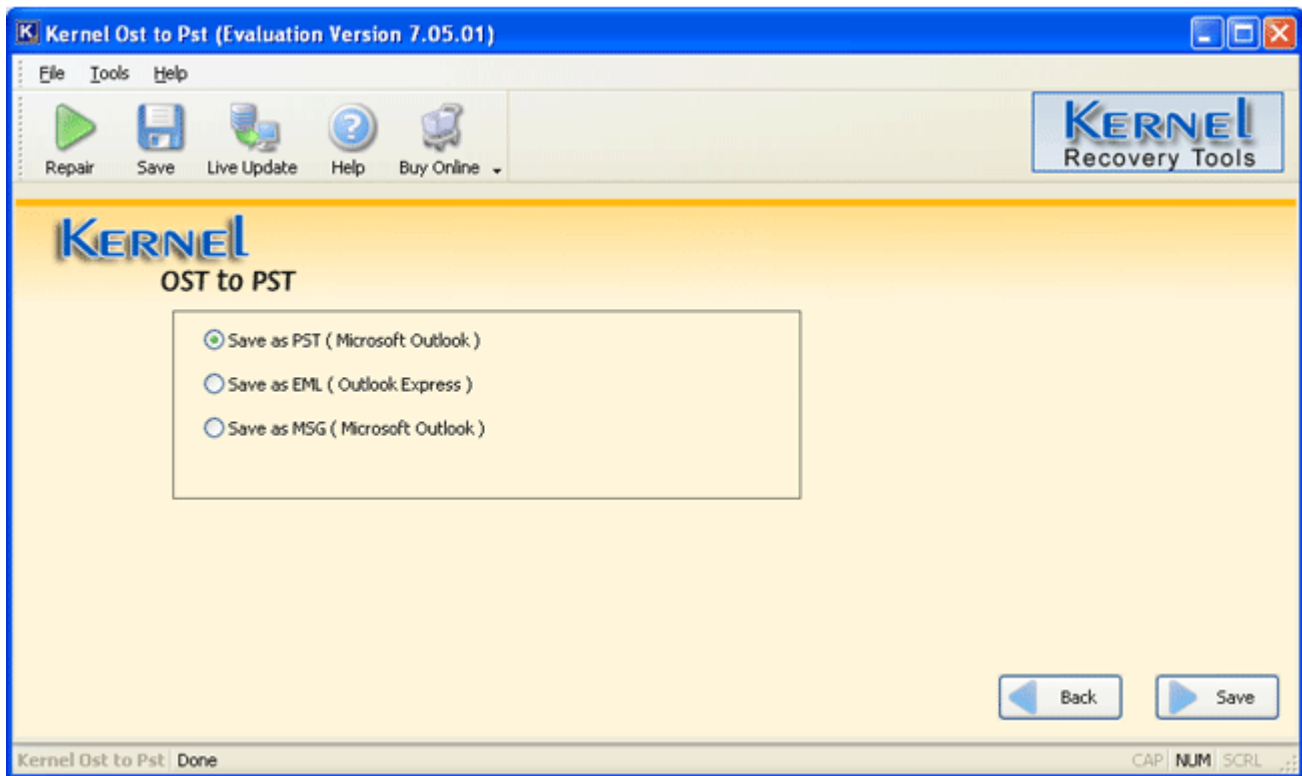


Figure 4.10: Save options in Kernel for OST to PST

5. Full Version

Although you can use Kernel for OST to PST evaluation version for free and can experience the capabilities of the software, but there are certain features that are not available in the evaluation version.

5.1 Requirement of Full Version

By using the evaluation version of Kernel for OST to PST, you can scan an .ost file and preview its contents but you cannot convert the .ost file into a .pst file. To convert the .ost file into a .pst file or any other desired file format, you will need to buy Full version of the software.

5.2 Purchasing Full Version

You can buy the full version of Kernel for OST to PST from any of our authorized resellers – Element5, Asknet and 2CO.

As soon the purchase transaction with our resellers gets completed, our sales team will send you an email comprising the URL to download the full version of Kernel for OST to PST and activation details of the software.

5.3 Upgrading to Full Version

If you are using the evaluation version of Kernel for OST to PST, you can upgrade to the full version by clicking **Buy Online** from the tool-bar. Alternatively, you can also upgrade to the full version by selecting the **Buy Online** option from **Help** menu of the menu-bar.

6. Software Updates and Support

To attain maximum benefits from the capabilities of Kernel for OST to PST, you should always ensure that you have the latest version of the software.

6.1 Upgrading to the Latest Version

To upgrade to the latest version of Kernel for OST to PST, you will need to perform the following steps:

1. Click **Tools**→ **Live Update** to launch the **Live Update** Window.
2. Click **Start** to download the latest software updates. Alternatively, you can also launch the Live Updates window by clicking **Live Update** in the tool-bar.

6.2 Help and Support

We have an extensive and efficient support system in place to assist our customers with all issues related to using Kernel for OST to PST.

Software comes with an embedded help manual that can be accessed by clicking **Help**→**Help** in the menu-bar or by clicking **Help** in the tool-bar. You can also press the F1 key on the keyboard of your computer to access the embedded help of Kernel for OST to PST.

You can access the online help for Kernel for OST to PST at <http://www.nucleustechnologies.com/Online-Helps.html>

We also have live support wherein you can chat with our software experts at <http://www.nucleustechnologies.com/Support.html>

To talk on phone with our software experts call:

Helpline:

+91-9818725861

1-866-348-7872 (Toll Free for USA/CANADA)

You can also email us about your queries at;

sales@nucleustechnologies.com for Sales

support@nucleustechnologies.com for Support

contact@nucleustechnologies.com for General Queries

7. Troubleshooting

This section deals with your generic and specific queries pertaining to using Kernel for OST to PST.

7.1 Common Issues

Why does Kernel for OST to PST have limits in evaluation copy?

Free evaluation version of Kernel for OST to PST software enables you to experience the capabilities of the software.

To convert and save the file items, you will need to buy the Full version of Kernel for OST to PST.

Can I install the software on the same drive which contains the .ost file that I want to convert?

Do not install Kernel for OST to PST on the same drive which contains the .ost file that you want to convert because your emails may get overwritten during the conversion process.

Is the software available on the CD-Rom or the Floppy disks?

Yes, Kernel for OST to PST is available on CD-ROM. Generally, we deliver our software online <http://www.nucleustechnologies.com/Buy-Data-Recovery-Software.html>

But if you want software through Media (CD-ROM, Floppy disks) you have to specify it in your order email. You have to pay the shipping charges.

7.2 Frequently Asked Questions

How can I upgrade the software?

To upgrade the software you have to send an email to sales@nucleustechnologies.com Please include your name, address, email address, order confirmation number and the name of the software you want to upgrade to.

How to Buy Kernel for OST to PST?

You can buy Kernel for OST to PST online at <http://www.nucleustechnologies.com/Buy-Data-Recovery-Software.html>

I have lost my full version for Kernel for OST to PST. Can you help me?

Please email us at sales@nucleustechnologies.com. Please include your name, address, email address, and order confirmation number (if you have it). We will be happy to help you.

Is my online order safe?

Yes, you get the most secure and safest ordering option to buy your software Kernel for OST to PST from Nucleus Data Recovery.com. We never share your personal information with third parties.



8. Legal Notice

This section comprises the legal specification about Kernel for OST to PST and the company NUCLEUS DATA RECOVERY.COM PRIVATE LIMITED

8.1 Copyright

NUCLEUS DATA RECOVERY.COM PRIVATE LIMITED, Nucleus Kernel, accompanied user manual and documentation are copyright of NUCLEUS DATA RECOVERY.COM PRIVATE LIMITED, with all rights reserved. Under the copyright laws, this user manual cannot be reproduced in any form without the prior written permission of NUCLEUS DATA RECOVERY.COM PRIVATE LIMITED. No Patent Liability is assumed; however, with respect to the use of the information contained herein.

© NUCLEUS DATA RECOVERY.COM PRIVATE LIMITED. All rights reserved.

8.2 Trademark

Nucleus Kernel ® is a copyright work of NUCLEUS DATA RECOVERY.COM PRIVATE LIMITED

Windows 95®, Windows 98®, Windows ME®, Windows NT®, Windows 2000 Server®, Windows 2000 Advanced Server®, Windows 2003 Server®, Windows XP®, MS Outlook, and MS-DOS are registered trademarks of Microsoft Corporation.

All other brand and product names are trademarks or registered trademarks of their respective companies.

8.3 Disclaimer

The Information contained in this manual, including but not limited to any product specifications, is subject to change without notice. NUCLEUS DATA RECOVERY.COM PRIVATE LIMITED provides no warranty with regard to this manual or any other information contained herein and here by expressly disclaims any implied warranties of merchantability or fitness for any particular purpose with regard to any of the foregoing NUCLEUS DATA RECOVERY.COM PRIVATE LIMITED assumes no liability for any damages incurred directly or indirectly from any technical or typographical errors or omissions contained herein or for discrepancies between the product and the manual. In no event shall NUCLEUS DATA RECOVERY.COM PRIVATE LIMITED, be liable for any incidental, consequential special, or exemplary damages, whether based on tort, contract or otherwise, arising out of or in connection with this manual or any other information contained herein or the use there of.

8.4 License Agreement

Nucleus Kernel for OST to PST Copyright © by NUCLEUS DATA RECOVERY.COM PRIVATE LIMITED

Your Agreement to this License

You should carefully read the following terms and conditions before using, installing or distributing this software unless you have a different license agreement signed by NUCLEUS DATA RECOVERY.COM PRIVATE LIMITED. The terms and conditions of this License describe the permitted use and users of

each Licensed Copy of Nucleus Kernel for OST to PST. For purposes of this License, if you have a valid license, you have the right to use a single Licensed Copy of Nucleus Kernel.

Scope of License

Each Licensed Copy of Nucleus Kernel for OST to PST may either be used by a single person or used non-simultaneously by multiple people who use the software personally installed on a single workstation. All rights of any kind in Nucleus Kernel, which are not expressly granted in this License, are entirely and exclusively reserved to and by NUCLEUS DATA RECOVERY.COM PRIVATE LIMITED. You may not rent, lease, modify, translate, reverse engineer, decompile, disassemble, or create derivative works based on, Nucleus Kernel, nor permit anyone else to do so. You may not make access to Nucleus Kernel available to others in connection with a service bureau, application service provider, or similar business, nor permit anyone else to do so.

Warranty Disclaimers and Liability Limitations

Nucleus Kernel for OST to PST, and any and all accompanying software, files, data and materials, are distributed and provided AS IS and with no warranties of any kind, whether expressed or implied. In particular, there is no warranty for the quality of data recovered. You acknowledge that good data processing procedure dictates that any program, including Nucleus Kernel, must be thoroughly tested with non-critical data before there is any reliance on it, and you hereby assume the entire risk of all use of the copies of Nucleus Kernel covered by this License. This disclaimer of warranty constitutes an essential part of this License. In addition, in no event does NUCLEUS DATA RECOVERY.COM PRIVATE LIMITED authorize you or anyone else to use Nucleus Kernel for OST to PST in applications or systems where Nucleus Kernel for OST to PST failure to perform can reasonably be expected to result in a significant physical injury, or in loss of life. Any such use is entirely at your own risk, and you agree to hold NUCLEUS DATA RECOVERY.COM PRIVATE LIMITED harmless from any and all claims or losses relating to such unauthorized use.

General

This License is the complete statement of the agreement between the parties on the subject matter, and merges and supersedes all other or prior understandings, purchase orders, agreements and arrangements. This License shall be governed by the laws of the State of Delhi. Exclusive jurisdiction and venue for all matters relating to this License shall be in courts and for a located in the State of Delhi, and you consent to such jurisdiction and venue. There are no third party beneficiaries of any promises, obligations or representations made by NUCLEUS DATA RECOVERY.COM PRIVATE LIMITED herein. Any waiver by NUCLEUS DATA RECOVERY.COM PRIVATE LIMITED of any violation of this License by you shall not constitute, nor contribute to, a waiver by NUCLEUS DATA RECOVERY.COM PRIVATE LIMITED of any other or future violation of the same provision, or any other provision, of this License.